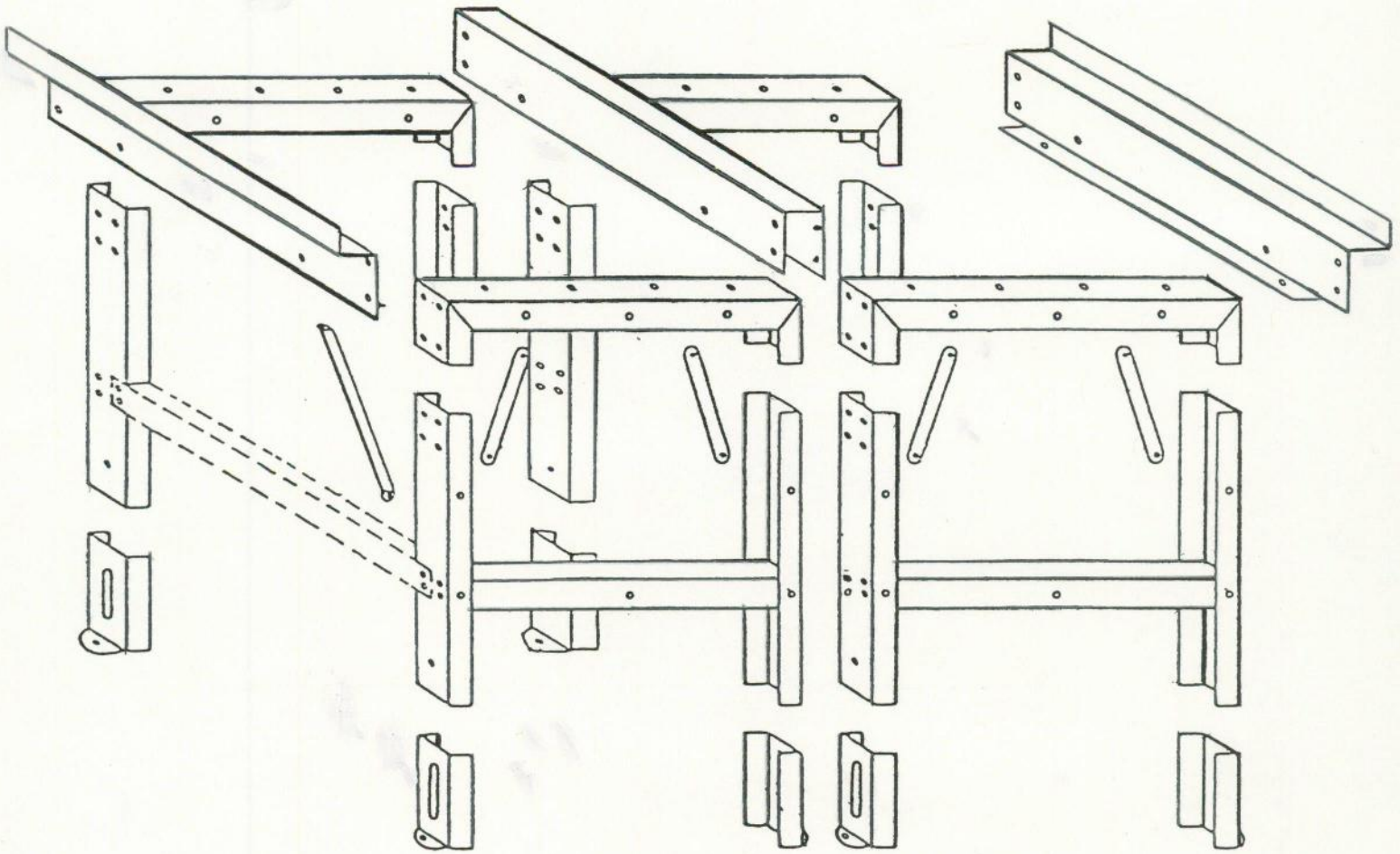


UNICRAFT Cutting Tables

"We build QUALITY"



WIDE TABLE ASSEMBLY INSTRUCTIONS
FOR TABLES 90" AND WIDER

ASSEMBLE WIDE TABLE BY FOLLOWING THE
BASIC INSTRUCTIONS FOR THE STANDARD
TABLE.

CONNECTING THE 2 TABLES TOGETHER
WITH 1 CENTER CONNECTING RAIL AND
OMITTING THE 2 INSIDE APRONS WILL BE
THE ONLY CHANGE.